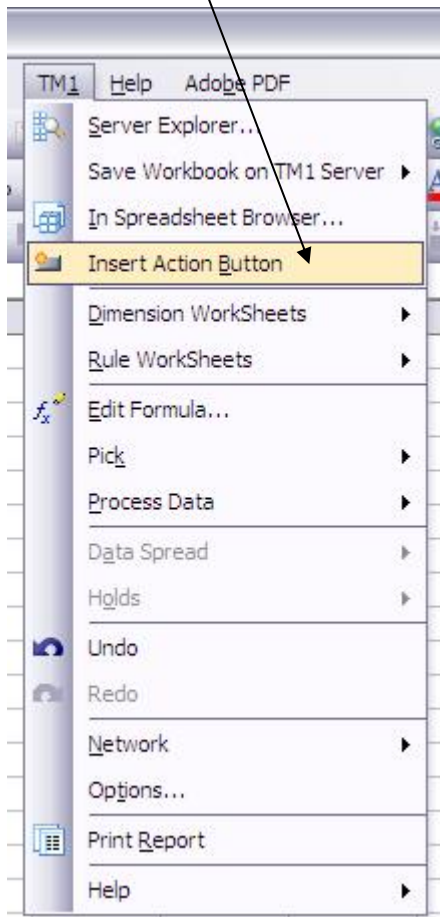


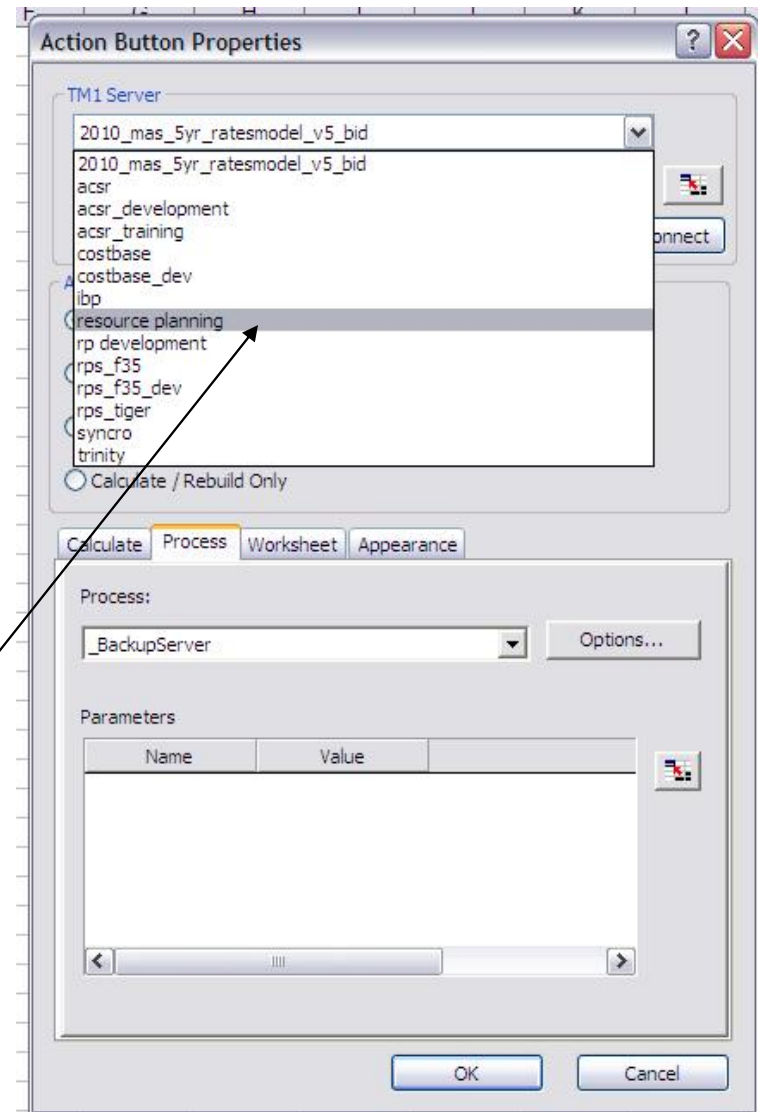
# **ERROR WHEN CREATING ACTION BUTTONS**

**RUNNING A TI INCLUDING PARAMETERS  
WHEN USER HAS MULTIPLE TM1 SERVERS  
SHOWN IN ADMIN HOST LIST**

1. Create new button via  
TM1 / Insert Action  
Button



2. Select TM1 server  
from dropdown



**Action Button Properties**

TM1 Server  
resource planning

☐ Use Reference Disconnect

**Action**

☒ Run a Turbo Integrator Process  
☐ Go to another Worksheet  
☐ Run a Process, then go to a Worksheet  
☐ Calculate / Rebuild Only

Calculate **Process** Worksheet Appearance

Process:  
UA\_Update Info Options...

Parameters

Name	Value
EEmail	0
Fname	0
Sname	0
ClientName	0

OK Cancel

3. Select TI to run from dropdown

4. Click cell select button and pick cell in worksheet to use as parameter value

**Select a Cell**

'Sheet1'!\$C\$9

OK Cancel

**Action Button Properties**

TM1 Server

2010\_mas\_5yr\_ratesmodel\_v5\_bid

☐ Use Reference

Disconnect

**Action**

☒ Run a Turbo Integrator Process

☐ Go to another Worksheet

☐ Run a Process, then go to a Worksheet

☐ Calculate / Rebuild Only

Calculate Process Worksheet Appearance

Process:

UA\_Update Info Options...

Parameters

Name	Value
EMail	=Sheet1!\$C\$9
Fname	0
Sname	0
ClientName	0

OK Cancel

5. On clicking OK after cell selection, GUI returns server to 1<sup>st</sup> value in list, not the server previously selected.

**TO AVOID THE ISSUE...**

**Action Button Properties**

TM1 Server  
resource planning

☐ Use Reference Disconnect

**Action**

☒ Run a Turbo Integrator Process  
☐ Go to another Worksheet  
☐ Run a Process, then go to a Worksheet  
☐ Calculate / Rebuild Only

Calculate **Process** Worksheet Appearance

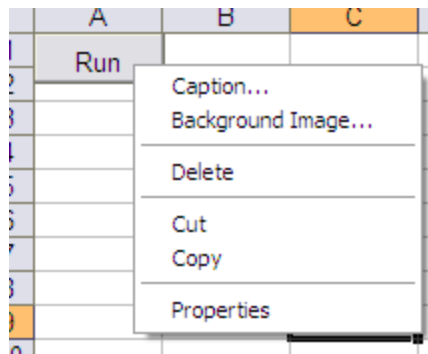
Process:  
UA\_Update Info Options...

Parameters

Name	Value
EMail	0
Fname	0
Sname	0
ClientName	0

OK Cancel

1. Once the TI has been selected click OK to close the GUI.



2. Right click the new button and select “Properties” to go back to the GUI

3. GUI will now remember all information correctly

