

# Release Notes

IBM Cognos TM1

TM1 9.1 SP4 Release

September 22, 2008

© Cognos, an IBM Company 2008



## About These Notes

These release notes are complete and accurate as of the publication date noted on the cover page. You can check for the most recent version of release notes for this TM1 release by visiting the [documentation pages](#) on the Cognos web site.

### Revision History:

Date	Item
09/22/2008	Initial publication.

## In This Release

This document contains the following information that is important to TM1 customers:

- TM1 9.1 SP4 Platform Support
- Language Support Statement
- Installation Notes
- New Features in TM1 9.1
- Documentation Updates
- Known Issues
- Fixed Customer Issues in TM1 9.1 SP4

## TM1 9.1 SP4 Platform Support

A complete TM1 9.1 SP4 platform support matrix is available [on the Cognos Web site](#).

## Language Support Statement

TM1 9.1 SP4 is available in English, French, and German.

Cognos tests and supports only single-language, single-locale configurations of the TM1 system. That is, all software components – client and server operating systems, version of Excel, version of TM1, browser, etc. are set to the same language and locale (e.g., US English, UK English, French FR). If these conditions are not valid, for example if client settings are different from server settings, some problems may occur. Cognos will make best efforts to fix such issues related to mixed language environments in subsequent service packs and releases.

## Technical Documentation Statement

Cognos makes every effort to ensure that the French and German versions of the TM1 technical documentation match the English documentation in content and meaning. In cases where the French and German technical documentation does not match the English documentation, the English documentation should be considered definitive.

## End-of-Life Statements

- Cognos has discontinued testing on a variety of older hardware platforms, operating systems, and databases. For example, Windows 2000 Advanced Server and Internet Explorer 5.5 are no longer tested or supported. Consult the platform support matrix at the beginning of these release notes or on the Cognos web site for information about currently supported platforms.
- The in-process local server is not supported beyond the 8.4.x releases.
- Active Maintenance Support for TM1 8.4.X will end on 31-DEC-2008.
- Support for the following items will be discontinued as of the next major TM1 release:
  - Windows 2000 client
  - Excel 2000
  - SAP ODBO Interface
  - HTTP Connector

- axnet ODBC Gateway

## Installation Notes

This section includes the latest information about installing TM1. This information should be used in addition to the information provided in the TM1 Installation Help that is available when installing TM1.

### Important Note about Upgrading from a Previous Installation of TM1

Starting with TM1 version 9.1, a new installation process is available to help you upgrade to a newer version of TM1.

TM1 major, minor, and service pack releases still require an un-install, but this will be performed by the Cognos software automatically.

### x64 Custom Installation and TurboIntegrator

When performing a custom installation of the x64 version of TM1 9.1 SP4, **DO NOT** select the Configure turbo integrator to use ODBC gateway option. If this option is selected, the installation will fail.

If you would like to configure TurboIntegrator to use the ODBC gateway, complete a custom installation (**without** selecting the Configure turbo integrator to use ODBC gateway option) and then add the following parameters to the Tm1s.cfg file:

UseELFODBC=T

ELFODBCServer=*NameOfServer*

ELFODBCUserName=*UserName*

ELFODBCPassword=*UserPassword*

All of the above parameters are described in the TM1 9.1 SP4 [Documentation Updates](#) publication.

### Rules Editor in TM1 9.1 SP4

The TM1 9.1 release introduced a new Rules Editor, which featured significant usability enhancements.

Due to several issues with the 3rd-party software component with which the 9.1 Rules Editor is built, Cognos has chosen to make the pre-9.1 Rules Editor the default editor for all **new** installations of 9.1 SP4. If you are upgrading to 9.1 SP4 from a previous version of TM1 9.1, TM1 will

use whichever mode of the Rules Editor is specified by the AdvancedRulesEditor parameter in the Tm1p.ini file.

The new 9.1 Rules Editor **is** available as part of 9.1 SP4. If you want to enable the 9.1 Rules Editor, you must set the following parameter in the Tm1p.ini file for your TM1 client:

AdvancedRulesEditor=T

If AdvancedRulesEditor=F, or if the parameter is not present in the Tm1p.ini file, TM1 invokes the pre-9.1 Rules Editor.

**NOTE:** You cannot enter ASCII extended characters in the new 9.1 Rules Editor using Alt-key-number-key combinations. You can, however, use other input methods such as IMEs (Input Method Editors) and native keyboards.

The pre-9.1 Rules Editor is documented in older versions of the [TM1 online help](#) and [Rules Guide](#).

## TM1 Web Requires Microsoft ASP.NET Framework 1.1

Cognos TM1 Web requires the Microsoft ASP.NET Framework 1.1, along with the .NET Framework 1.1 Service Pack 1, to be installed on the Web server used to deliver TM1 Web.

**IMPORTANT:** TM1 9.1 SP4 does not support the ASP.NET Framework 2.0.

You can download and install the .NET Framework 1.1, along with the 1.1 Service Pack 1, from the Microsoft Web site:

<http://www.microsoft.com/downloads/results.aspx?poCId=&freetext=.net%20framework&DisplayLang=en>

To ensure that the .NET Framework 1.1 is properly installed and registered on your computer, perform these steps:

1. Manually register the Microsoft ASP.NET Framework 1.1 by opening a Command Prompt window and changing to the following directory:  
C:\windows\Microsoft.NET\Framework\v1.1.4322
2. Execute the following command:  
aspnet\_regiis.exe -i

If you do not perform the previous steps, or for some reason the Microsoft ASP.NET Framework 1.1 is installed but not registered on your computer, you may receive the following error when installing TM1:

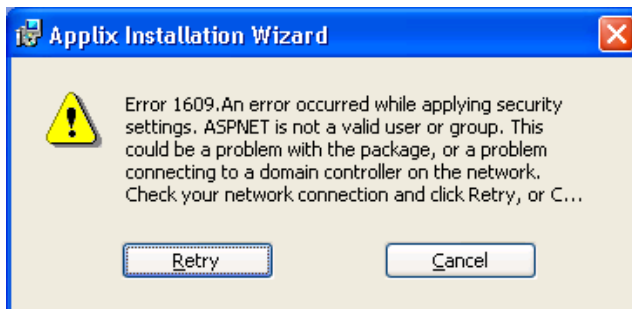


If you experience this error, follow these steps to correct the error and successfully install TM1:

1. Uninstall TM1 using Add/Remove Programs in the Windows Control Panel.
2. Manually register the Microsoft ASP.NET Framework 1.1 as explained above.
3. Run the TM1 installation again.

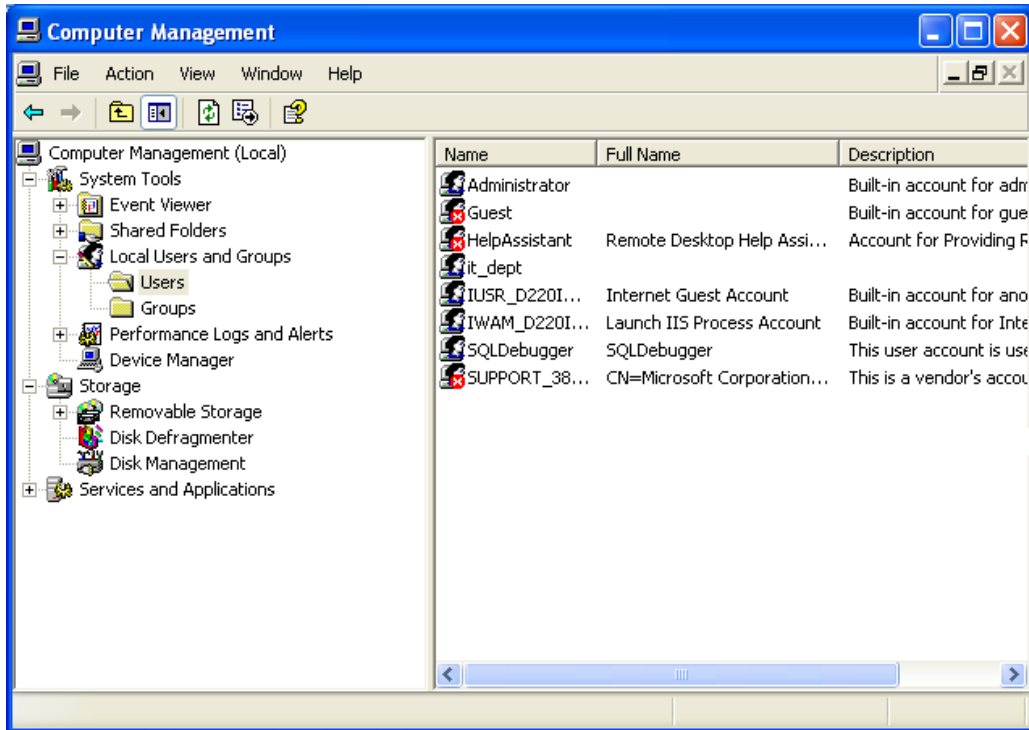
### TM1 Web Installation Fails if the ASPNET User is not Defined

If you attempt to install TM1 Web on a system where the Microsoft .NET Framework is not yet installed, the TM1 Web installation will fail if the ASPNET user is not defined on the system.



You must define the ASPNET user before installing TM1 Web. To create the ASPNET user:

1. Open the Windows Control Panel.
2. Double-click **Administrative Tools**.
3. Double-click **Computer Management**.
4. Click **Local Users and Groups**.



5. Right-click **Users** and select **New User**.

The New User dialog box appears.

Configure the dialog box as follows, using a password of your choice.

The 'New User' dialog box is shown with the following configuration:

- User name: ASPNET
- Full name: ASP.NET Machine Account
- Description: Account for running ASP.NET applications
- Password: [masked with dots]
- Confirm password: [masked with dots]
- ☐ User must change password at next logon
- ☒ User cannot change password
- ☒ Password never expires
- ☐ Account is disabled

Buttons: Create, Close

6. Click **Create**.

# Planning Manager

## Planning Manager 1.3 SP1 Hotfix 2

If you have never installed Planning Manager, you must install all of the following components:

- TM1 9.1 SP4 (CD)
- Planning Manager 1.3 SP1 (CD)
- Planning Manager Hotfix 2 (available only through Cognos Customer Support).

If you are already running TM1 9.1 SP4, you must also apply Planning Manager 1.3 SP1 Hotfix 2 which is available only through Cognos Customer Support.

## Upgrading to 9.1 SP4 with Planning Manager 1.3

When you install a new version of TM1 Web, the old TM1 Web directory is retained on the web server and the new TM1 Web directory is created. After installing a new version, a number is appended to the old TM1 Web directory name. For example, if your web server has a previous version of TM1 Web installed and you upgrade to TM1 9.1 SP4, your web server's root directory (C:\inetpub\wwwroot by default) will contain two TM1 Web directories:



In this example, TM1Web.1 is the old directory and TM1Web is the new directory.

If you are upgrading to TM1 9.1 SP4 and are running Planning Manager 1.3 with TM1 Web, all relevant Planning Manager files are automatically moved from the old TM1 Web directory to the new TM1 9.1 SP4Web directory. However, the Planning Manager configuration section of the new Web.config file is *not* updated to reflect any customizations you may have applied.

If you want to retain your Planning Manager customizations, you must:

1. Copy the Planning Manager configuration section from the Web.config file in the old TM1Web directory.



The Planning Manager configuration section is part of the appSetting portion of the configuration file and appears immediately before the </appSettings> tag.

```
<!--***** Planning Manager configuration options *****-->
<!--PM_ToolbarCaption: Caption for the Planning Manager Toolbar->
<add key="PM_ToolbarCaption" value="Planning Manager" />
<!--PM_ToolbarCaptionWidth: Width of the Caption for the Planning Manager Toolbar->
<add key="PM_ToolbarCaptionWidth" value="120" />
<!--PM_VersionCaption: Caption for the Version select dropdown list in Planning Manager->
.
.
.
<!--Width of the Caption for the Attachments Button in Planning Manager->
<add key="PM_AttachmentsCaptionWidth" value="30" />
<!--open shared files from client side->
<add key="PM_AttachmentsAllowOpenClientFile" value="true" />
</appSettings>
```

2. Paste the Planning Manager configuration section to same location within the Web.config file in the new TM1Web directory.
3. Set the DisplayCustomToolbar key as follows in the new Web.config file:

```
<add key="DisplayCustomToolbar" value="Y;url=TM1WebPlanManToolbar.aspx;Height=28" />
```

## New Features in TM1 9.1

This section includes important information about new and changed functionality in TM1 9.1.

### TM1 9.1 Feature and Enhancement Descriptions

All new features and enhancements introduced in TM1 9.1 are included in TM1 9.1 SP4. For further details on these features, see the publication [‘What’s new in TM1 9.1’](#) available on the Cognos web site.

### Memory Usage

In TM1 9.1, the TM1 Server delivers greatly improved concurrency and overall stability, as well as better diagnostics and monitoring capabilities. A side-effect of these necessary changes is that the TM1 Server may consume more memory than in previous versions. The amount of

additional memory is primarily model-dependent. Customers who in previous versions have observed that they operate close to the memory limits of their hardware, should anticipate adding additional memory and/or modifying their models using documented TM1 memory optimization techniques. Customers who are currently using 32-bit TM1 Server near the 3 GB limit, may need to upgrade to a 64-bit TM1 Server. See the Recommended Practices Repository on the Cognos website ([http://www.applix.com/rp/tm1\\_recommended\\_practices.htm](http://www.applix.com/rp/tm1_recommended_practices.htm)) for articles on TM1 memory optimization and monitoring TM1 Server memory usage. Also, see the documentation on “TM1 Counters” in the *TM1 Operations Guide* for more information.

## LockOn, LockOff, AllowExternalRequests Deprecation

The LockOn, LockOff, and AllowExternalRequests functions are no longer applicable in 9.1 due to changes in the TM1 9.1 locking model. If these functions appear in any TurboIntegrator processes they will be ignored.

## ProgressMessage Server Configuration Parameter

The ProgressMessage server configuration parameter is now set to F in the Tm1s.cfg file for 9.1 SP2 TM1 servers. This is a change from previous versions, where the ProgressMessage parameter was not included in the standard Tm1s.cfg file created during installation.

The ProgressMessage server configuration parameter is described in the *TM1 Operations Guide*.

## SAP Connector/TurboIntegrator Enhancements

Significant enhancements have been made to TurboIntegrator to allow greater control over metadata and data imports from SAP BW. For details, please see Chapter 4 of the *TurboIntegrator Guide*.

## TM1User TurboIntegrator Function

The new TM1User TurboIntegrator function returns a string containing the name of the current TM1 user. This function is described in the [TM1User TurboIntegrator Function technical bulletin](#), available on the Cognos web site.

## BriefingBookSheetSaveThreshold Parameter to TM1ExcelService.exe.config

In some instances that are difficult to predict, Excel issues an error when attempting to generate a briefing book with the TM1 Print Report feature. The error usually occurs when generating a report containing a large number of sheets with multiple title dimensions or when generating a report containing multiple images and/or charts.

When the error occurs, an Excel error message appears on screen and the briefing book generation fails.

To address this issue, the new `BriefingBookSheetSaveThreshold` parameter can be set after you encounter an Excel error while generating a briefing book. The parameter forces a 'silent save' during report generation, ensuring that subsequent attempts to generate a briefing book will succeed.

To set the `BriefingBookSheetSaveThreshold` parameter value:

1. After an error occurs while generating a briefing book, open the `Tm1ExcelService.log` file.

This file is located in the `<TM1_install_dir>\bin` directory. If you accepted the default installation directory, the location is `C:\Program Files\Cognos\TM1\bin`.

2. In the log file, locate the following line:

Exception occurred while copying sheets for briefing book on sheet: *n*

Here, *n* is the sheet number that caused the Excel error. Make note of the sheet number, you will use it to set the `BriefingBookSheetSaveThreshold` parameter value.

3. Open the `TM1ExcelService.exe.config` file. This file is located in the `<TM1_install_dir>\bin` directory.
4. Set the `BriefingBookSheetSaveThreshold` parameter to a value that is one less than the sheet number that caused the Excel error.  
  
For example, if sheet number 51 caused the error, set `BriefingBookSheetSaveThreshold` to 50.
5. Save `TM1ExcelService.exe.config`.
6. Shut down and restart the TM1 Excel Service.

In **most** cases, this should eliminate the error when generating the briefing book. However, you might discover that an error still occurs when generating a briefing book, in which case you must repeat the steps above to set a lower `BriefingBookSheetSaveThreshold` value. You will eventually arrive at the correct value through trial and error.

You can set `BriefingBookSheetSaveThreshold` to a low value (<10) to eliminate the possibility of encountering an error when generating a briefing book, but this will cause a degradation in performance. To maintain optimal performance, `BriefingBookSheetSaveThreshold` should be set to the highest possible value that avoids errors.

## ClientProperties Status

The `STATUS` field of the `}ClientProperties` control cube is no longer maintained in recent releases of TM1 because of the contention it introduces when multiple users log into the server simultaneously. If you use the `STATUS` field of the `}ClientProperties` control cube you can enable a background thread to keep the `STATUS` field up-to-date by setting the `ClientPropertiesSyncInterval` configuration parameter in `tm1s.cfg`.

The background thread will wake up periodically and update the `STATUS` field for all clients indicating which are currently connected to the server. The configuration parameter `ClientPropertiesSyncInterval` is the number of seconds the background thread waits between updates. Setting the value to 0 disables the background thread. `ClientPropertiesSyncInterval` is dynamically configurable.

Users connecting to the server still do not directly update the `}ClientProperties` control cube so there is no contention during the login process.

## Controlling Default Calculation of Websheets

The `UseBookRecalcSetting` parameter controls the default recalculation mode when you view an Excel workbook as a Websheet in TM1 Web.

By default, Websheets are set to automatic recalculation mode when you view them in TM1 Web. If you want to use the calculation setting that was saved in the workbook with Excel, you can use the `UseBookRecalcSetting` parameter to have TM1 Web read the setting from the workbook/worksheet.

For example, if you set the calculation mode of a workbook in Excel to Manual, then this setting will be used in TM1 Web when you open the Websheet.

To edit the `UseBookRecalcSetting` parameter, locate the following line in the `<appSettings>` section of the `Web.config` file for TM1 Web.

```
<add key="UseBookRecalcSetting" value="false" />
```

Adjust this parameter as follows:

If set to true, TM1 Web uses the calculation setting saved in each Excel workbook.

If set to false, TM1 Web uses the same calculation setting for all Websheets, as determined by the current setting of the Automatic Recalculation button in the TM1 Web toolbar.

The default value for this parameter is false, keeping the same behavior as previous versions of TM1 Web.

## Documentation Updates

See the Documentation Updates publication, available from Cognos support, for a full accounting of all documentation updates for the 9.1 SP4 release.

## Known Issues in TM1 9.1 SP4

See the *Known Issues in TM1 9.1 SP4* publication, available from Cognos support, for a full accounting of all known issues for the 9.1 SP4 release.

## Fixed Customer Issues in TM1 9.1 SP4

The following table lists significant customer-reported issues that are resolved in TM1 9.1 SP4.

TM1 9.1 SP4 also includes all resolved issues from previous 9.1 releases. For details on issues resolved in a previous release, refer to the release notes for the specific release, available on the [Cognos web site](#).

**Note:** This list may not be complete. If you have a question regarding the status of an inquiry, please contact [Cognos customer support](#).

ICC #/Insight ID	Summary
N/A	TM1 version 8.2 client is significantly faster at loading an uncalculated view than the TM1 version 9.1 client.
363390	<p>Due to a limitation with Excel 2003, attempting to export Excel/PDF with a large number of websheets can cause TM1 Web to return an error.</p> <p><b>NOTE:</b> A new parameter, BriefingBookSheetSaveThreshold, has been added to tm1excelservice.exe.config to address this issue. For more details, see <a href="#">BriefingBookSheetSaveThreshold Parameter to Tm1excelservice.exe.config</a> above.</p>

ICC #/Insight ID	Summary
11-76608167 & 11-82035731	Specific MDX query against a TM1 cube returned extraneous rowsets. Previous update releases degraded TM1's response time when processing MDX statements, especially those containing zero suppression queries. TM1 server crashed when creating a view by MDX expression.
11-69233259	Copying and pasting string text that is longer than 256 characters is causing corrupt cell values in the current cell and other cells with recent text entries.
11-67959937 364090 11-76844524	TM1 server crashes when creating a consolidation from a subset.
11-77468579 & 11-79737871	DBRW formulas using alias values, instead of element ids, are sporadically returning KEY_VALUE errors in Excel.
11-66790613	Replication reports an error when synchronizing a cube on a planet server after deleting a newly added rule and element on the star server.
11-66294707 363327	Some TI processes are causing poor performance when executed with TM1 version 9.1 SP3 U1.
364217	The SaveDataAll TI function is not working correctly in TM1 version 9.1 SP3 when saving views generated in a chore/process.
N/A	TM1 server crashes when viewing an element after the TM1 client (user) that held a lock on the element is deleted.
364647	The tm1server.log file is reporting the following message when users log into certain servers through TM1 Architect or TM1 Perspectives: "TM1.Server GetCollection used to bypass GetBlobs".
N/A	Browsing a view in the cube viewer is slower in TM1 9.1 SP3 compared to previous versions of TM1 9.0.
11-75675941	The inclusion of a comment could cause a server failure.
11-82290441 & 11-72058145	Active status property value is not displayed on }ClientProperties cube. To enable this functionality now, you need to add a new tm1s.cfg config parameter, ClientPropertiesSyncInterval, and set it to a positive number. This is frequency, in seconds, with which the thread will update the }ClientProperties cube. The config parameter is dynamically configurable. If set to 0 at any time, updates to the cube will stop. See <a href="#">ClientProperties Status</a> above.
	Under certain complex condition rules TM1 did not skip export calc data as required.
11-81806473	Cancellation of a TI process no longer causes the error log and other ASCII files to lock up.

ICC #/Insight ID	Summary
	Locking during an ODBC TI process that sometimes resulted in truncating text has been fixed.
357405	On TM1 Web, when a user enters data and then uses the spread function data sometimes appeared to be lost when data was submitted on the sheet. This problem has been fixed.
11-82261801	Views saved with automatic calculation or when zero suppression was invoked sometimes caused server failures. These problems have been fixed
11-78871122)	Feeder stack Overflow prevents server from starting.
11-71446378)	Opening and closing a chore changed time by one hour.
11-79485441)	Choosing Zero Out Portion inadvertently deleted the current view.
11-76825661)	Cubes failed when a dimension index was incorrectly saved.
11-79134699	Selecting relational data after drilling through caused a failure.
11-76209541	ViewZeroOut improperly processed cube cells.
11-76135698	Multiple users simultaneously accessing certain worksheets sometimes caused "unable to open file" errors.
11-76905251	Use of double apostrophe in an element name caused errors when trying to slice to a title position.