

TM1 Server Monitor 1.1

User Guide

Created by: Ricky Marwan

Contact: ricky.marwan@gmail.com

Contents

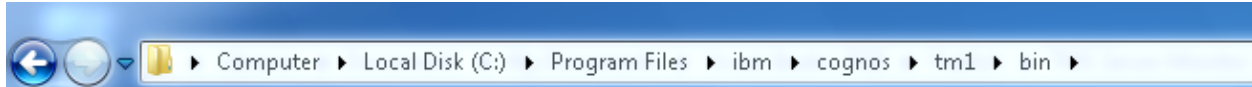
Setup and Run.....	2
Extract to TM1 bin Directory.....	2
Add TM1 bin Directory in Options Dialog.....	2
Using TM1 Server Monitor.....	2
Connect to Server	2
Verify Admin Access.....	3
Cancel Thread	3
Disconnect Client	4
Send Message	4
Log to file.....	4
Viewing Log File with Notepad	4
Viewing Log File with Excel	4
View Logs Folder	4
Broadcast Message	4
Monitor TM1 Server Message Log.....	5
System Requirements	5

Setup and Run

To setup and run TM1 Server Monitor you may choose any of the following options:

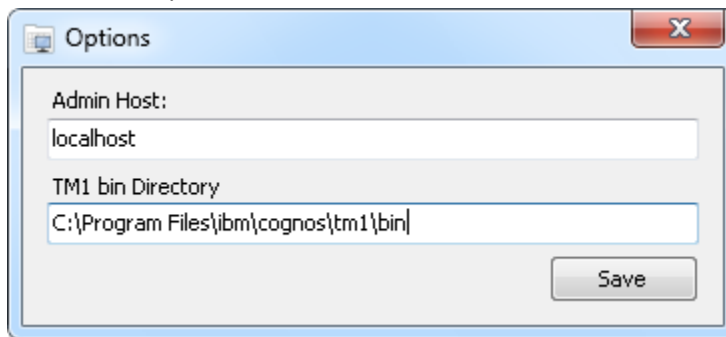
Extract to TM1 bin Directory

- Unpack to your TM1 bin Directory and run TM1 Server Monitor.exe



Add TM1 bin Directory in Options Dialog

- Unpack to any folder and run TM1 Server Monitor.exe
- Go to File > Options

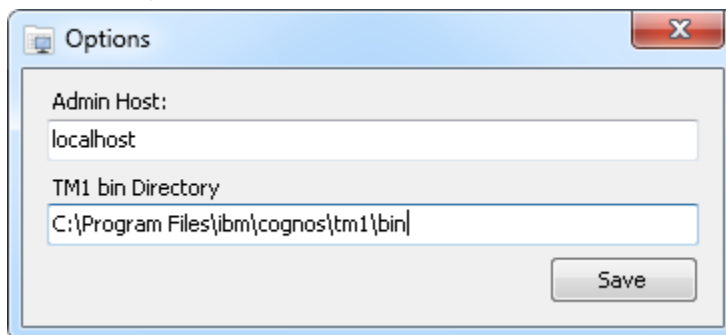


- Save

Using TM1 Server Monitor

Connect to Server

- Go to File > Options, add admin host separated by semi colon LOCALHOST;SERVERXX

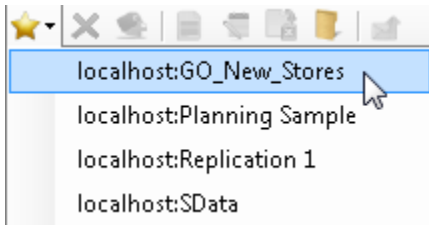


- Save

- Click on Refresh button to Refresh Available Server(s)

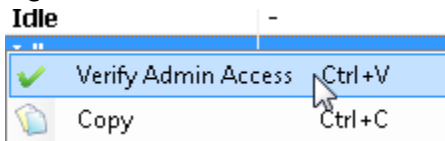


- Click Select Server button

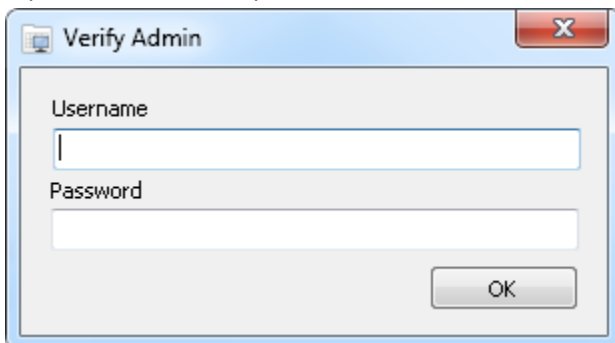


Verify Admin Access

- Right click on one of activities and select Verify Admin Access

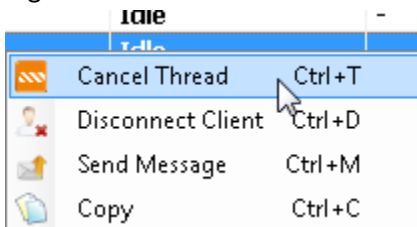


- Or select one of activities and press Ctrl + V Keys
- Input username and password



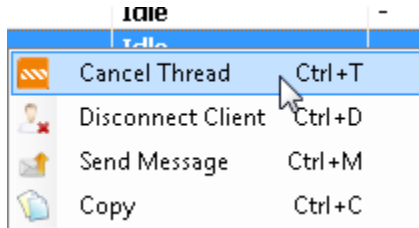
Cancel Thread

- Right click on one of active threads and select Cancel Thread



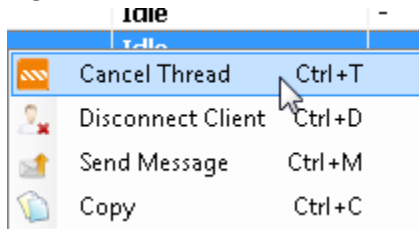
Disconnect Client

- Right click on one of active threads and select Disconnect Client



Send Message

- Right click on one of active threads and select Send Message



Log to file

- Click on Enable Log button, this will log all activities to a file



- To turn off logging simply click the same button

Viewing Log File with Notepad

- Click on Open Log in Notepad button, this will open log file in Notepad



Viewing Log File with Excel

- Click on Open Log in Excel button, this will open log file in Excel



View Logs Folder

All log files will be stored in Logs Folder

- Click on View Logs in Explorer button, this will open Windows Explorer



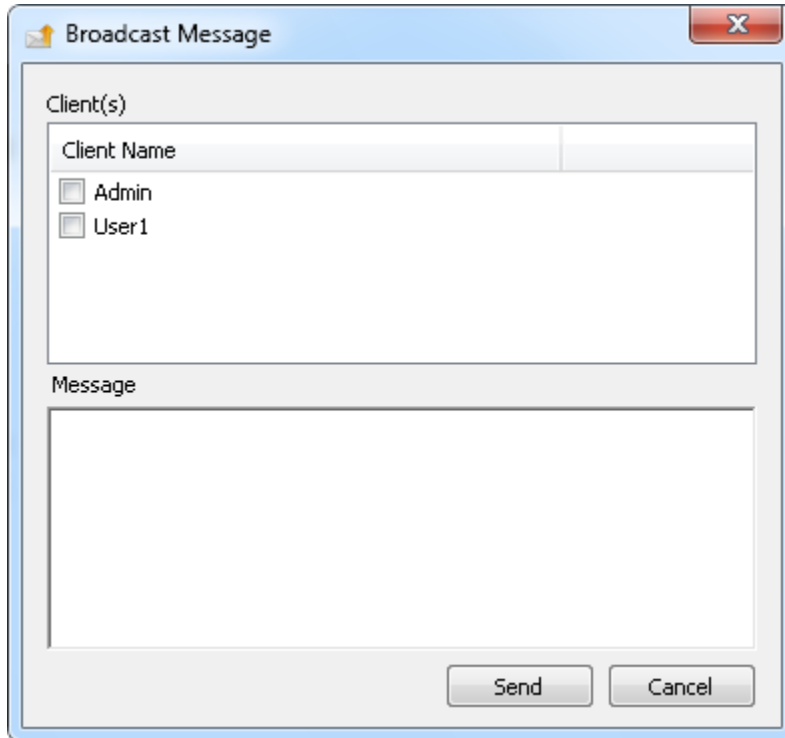
Broadcast Message

Broadcast message to multiple active clients.

- Click on Broadcast Message button



- Select Clients



- Enter message and Send

Monitor TM1 Server Message Log

Once admin access verified TM1 Server Monitor will peek into TM1 Server Message Log.

Message Log					
3704	[a]	ERROR	2012-10-10 04:17:54.492	TM1.Process	Process "import_newstores": finished executing with errors. Error file:...
3704	[a]	INFO	2012-10-10 04:17:54.461	TM1.Process	Process "import_newstores" executed by user "User1"
3704	[a]	INFO	2012-10-10 04:17:49.454	TM1.Process	Process "import_data": finished executing normally, elapsed time 0.03 s...
3704	[a]	INFO	2012-10-10 04:17:49.423	TM1.Process	Process "import_data" executed by user "User1"

You can double-click entries that contain log file (TM1Process_xx_xx.log) to view the contents of the log file.

System Requirements

- TM1 Version 9.5 onwards
- Microsoft .Net Framework 4.0