



Access TM1 Data From Everywhere!

What is TM1Connect?

TM1Connect is a specialized conversion utility that transforms TM1 data into QlikView, Tableau, Business Objects and ODBC compliant applications.

TM1Connect Features:

- Smart Cache
- Data Streaming
- Direct Access to TM1, no importing or exporting data
- Honors TM1 Security
- Convert your data in minutes vs. weeks.
- Scheduled Batch Exports
- Drag & Drop Interface

Follow Us!

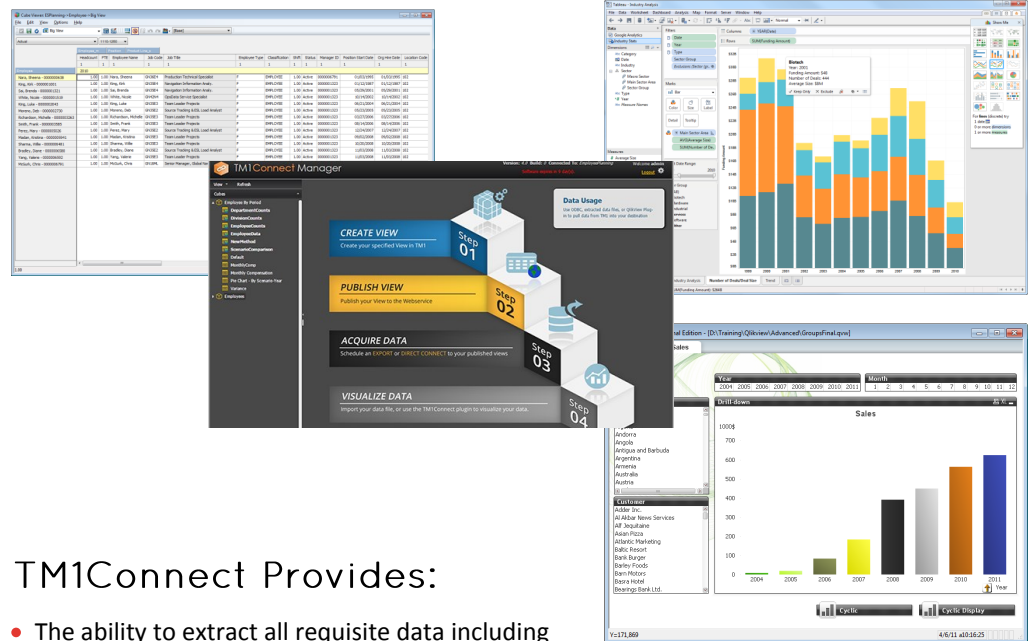


CarpeDatum Consulting, Inc.

3131 South Vaughn Way, Suite 214
Aurora, CO 80014
303.627.8000
info@carpedatuminc.com

www.carpedatuminc.com

Connect Tableau, Qlikview, Microstrategy, MS Access and other ODBC compliant applications to TM1 data in real time.



TM1Connect Provides:

- The ability to extract all requisite data including attributes, consolidated and/or ruled TM1 data.
- An intelligent multidimensional to relational data conversion engine that accommodates the nuances of unbalanced and ragged hierarchies.
- A drag-and-drop interface that business users can use to:
 - Define the TM1 data to extract
 - Set various extract options
 - Preview your data or before publishing
- Two modes: Direct connect or Batch extract mode.
- Multiple export formats including QVX, CSV, or TXT.
- Extracts up to the minute data from TM1.
- The ability to honor TM1 security.
- Connection to TM1 using ODBC even for hosted TM1 systems.
- Connection to TM1 via ODBC over the internet.

Download Your

#30DAY Trial Today!

www.TM1Connect.com